

Harmes Turner Brown

Matham Road, East Molesey, KT8 0BE

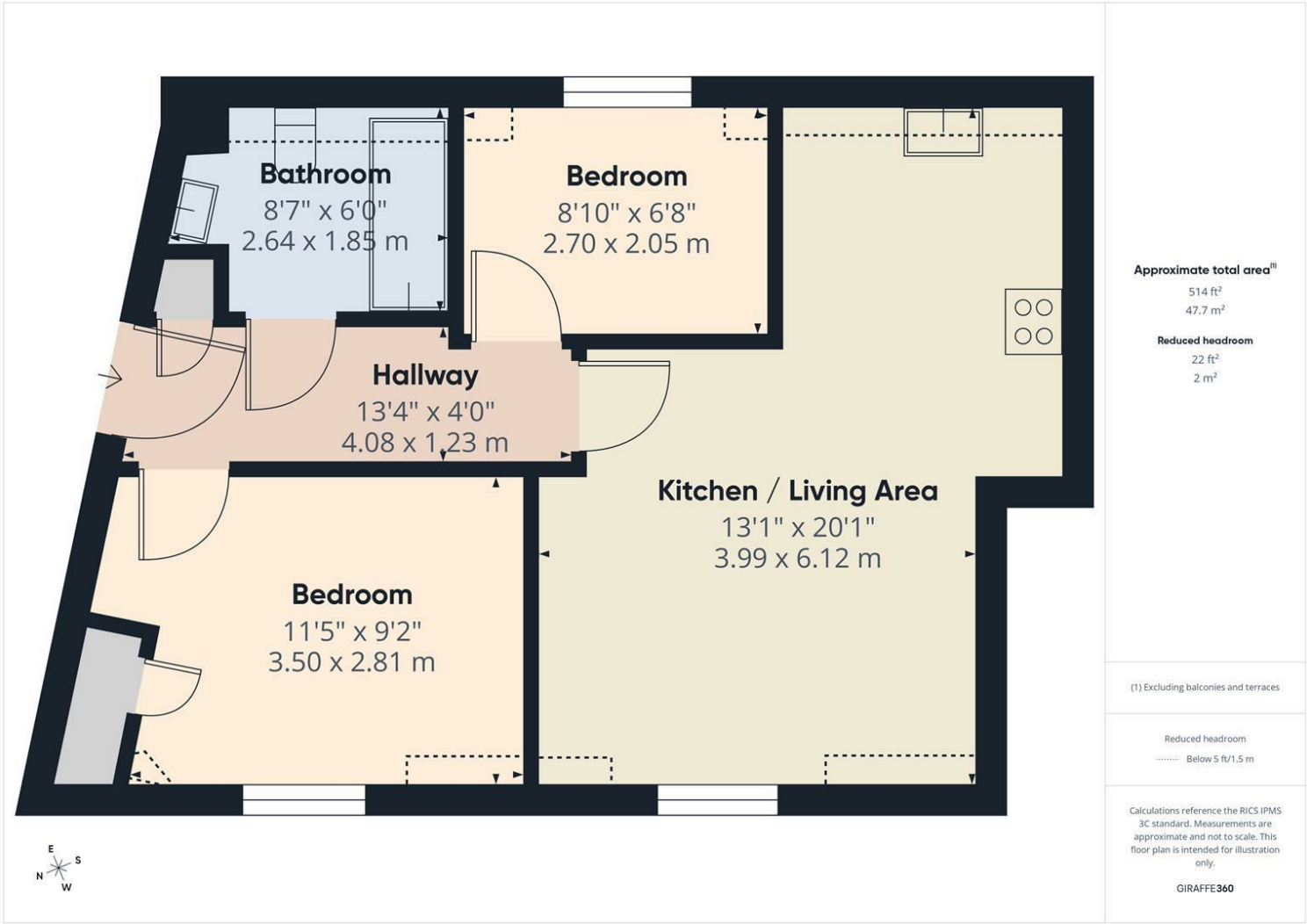


Asking Price £400,000 Leasehold

Harmes Turner Brown are pleased to offer this modern two bedroom second floor apartment forming part of a small gated development which is ideally situated close to all local village amenities and being within a short distance of Hampton Court train station. New Inn Court was refurbished in 2002, having formerly been an Inn and Stables originally build in the early 1800's, and is located in part of the historic conservation area of East Molesey.

The property is well presented and briefly comprises:- entrance hallway leading to a bright and airy living room with open-plan shaker style kitchen with fitted appliances, two double bedrooms with a modern fully tiled white bathroom suite. Other notable features include gas central heating and double glazing throughout. There is an allocated parking space to the property which is in a gated car park to the rear within historic walls dating back to the 1660's (Charles 2) Council tax £2442 PA. Please contact our East Molesey office on 0208 001 8385 to arrange a viewing.

Matham Road, East Molesey, KT8 0BE



- CENTRAL VILLAGE LOCATION IN EAST MOLESEY CONSERVATION AREA
- DOUBLE GLAZING
- SECURE ALLOCATED PARKING SPACE
- OPEN-PLAN LIVING KITCHEN ROOM
- GAS CENTRAL HEATING VIA RADIATORS
- 101 YEAR LEASE
- BRIGHT AND AIRY ACCOMMODATION